

Let The Technologist Know If...

- You are pregnant or breastfeeding
- You have had a bone scan before
- You have had a recent barium study or an X-ray using contrast
- You have had fractures or joint replacements

Results of the Test

Normal Results:

The radioactive tracer is evenly distributed among the bones. No areas of abnormally high or low accumulation are seen.

Abnormal Results:

The tracer may accumulate in certain areas of the bone, indicating one or more hot spots. Hot spots may be caused by a fracture that is healing, bone cancer, a bone infection, arthritis, or a disease of abnormal bone.

What Happens After the Test?

The tracer will leave your body within a few days. To speed up the process of the tracer leaving your body drink extra water and urinate often for 24 hours after your scan. You should feel no side effects after the procedure, and no aftercare is necessary. If you're breastfeeding, your doctor might ask you to stop for 24 hours after the tracer injection.

How Do I Get the Test Results?

After the test is over your pictures will be sent to a radiologist who will read the pictures. Your doctor will let you know when the results are ready, this is usually 24-48 hours after the scan.

Where can I find more information concerning Bone Scans?

http://www.webmd.com/hw/health_guide_atoz/hw200283.asp

<http://www.mayoclinic.com/health/bone-scan/CA00020>

Visit our Website:
www.palmettofamilymed.com

Bone Scan

Using Nuclear Medicine to Find Bone Abnormalities



Palmetto Family Medicine

1655 Bernardin Ave., Suite 350

Columbia, SC 29204

(803)-256-2286

Fax (803)-256-1994

What is a Bone Scan?

A bone scan is a nuclear scanning test that identifies new areas of bone growth or breakdown. In a sense, a nuclear procedure such as a bone scan is the opposite of a standard X-ray. An X-ray passes radiation into your body to create a picture. In a nuclear scan, the source of radiation is inside your body and travels to the surface, where a camera detects it.

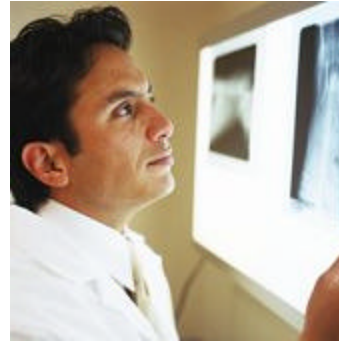
Why Have a Bone Scan?

A bone scan may be done to help diagnose broken bones, such as a hip fracture or a stress fracture, detect damage to the bones caused by infection or other conditions, or to identify cancer in the bones. A bone scan uses a small amount of injected radioactive matter (tracer) and a camera to form a picture. A bone scan can often detect a problem days to months earlier than a regular X-ray test.



During Your Scan

You will lie on an imaging table while a camera takes pictures around you. For best results relax and stay as still as you can. This will help ensure that the images taken will be clear. Images of your bones will be viewed on a screen.

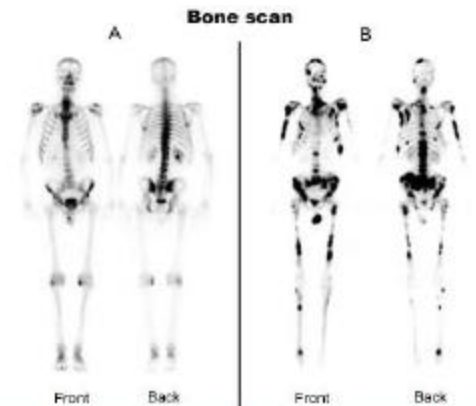


What to Expect with a Total Body Scan

There is no prep for this test, meaning you do not have to change your eating or anything other part of your daily routine. A radioactive tracer will be injected into your arm. After the injection you will have a 3 ½ to 4 hour waiting period. The waiting time allows the tracer to concentrate in your bones. During this waiting period you will be instructed to drink extra fluids to allow for better pictures to be taken. After your waiting period is over the scan will be completed from head to toe.

What to Expect with a 3 Phase Scan

This test is usually for people with potential bone infections or fractures. There is no prep for this test, meaning you do not have to change your eating or anything other part of your daily routine. There will be two sets of pictures taken during this test. A radioactive tracer will be injected into your arm. Pictures will be taken during the injection to look at your blood flow. The area of interest will then be scanned to take the pictures of the bones. A second set of pictures will be taken 3.5-4 hours later.



Scan A shows hot spots (dark areas) in both knees, a sign of arthritis in this case.

Otherwise it shows normal bone metabolism. Scan B shows a number of hot spots.